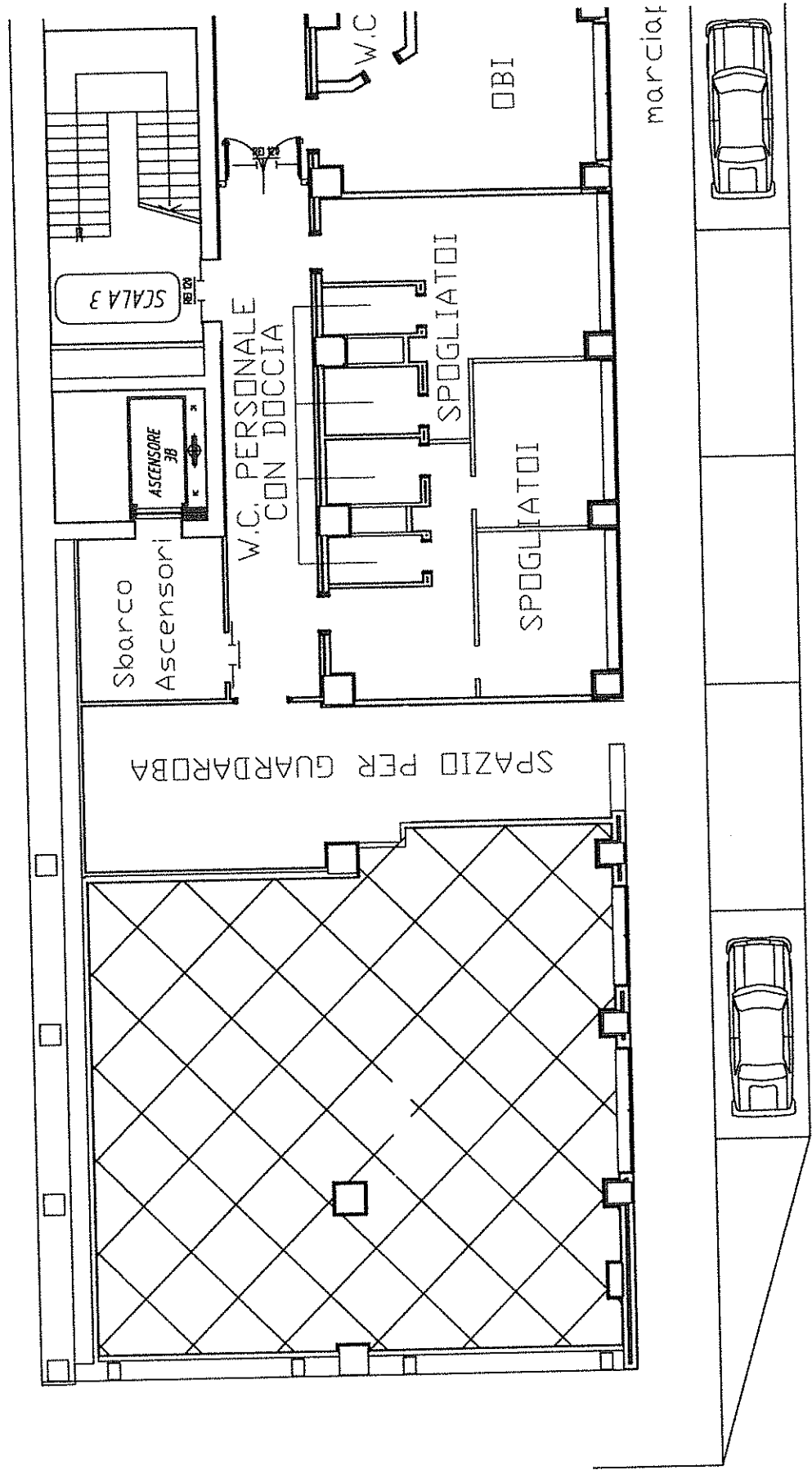
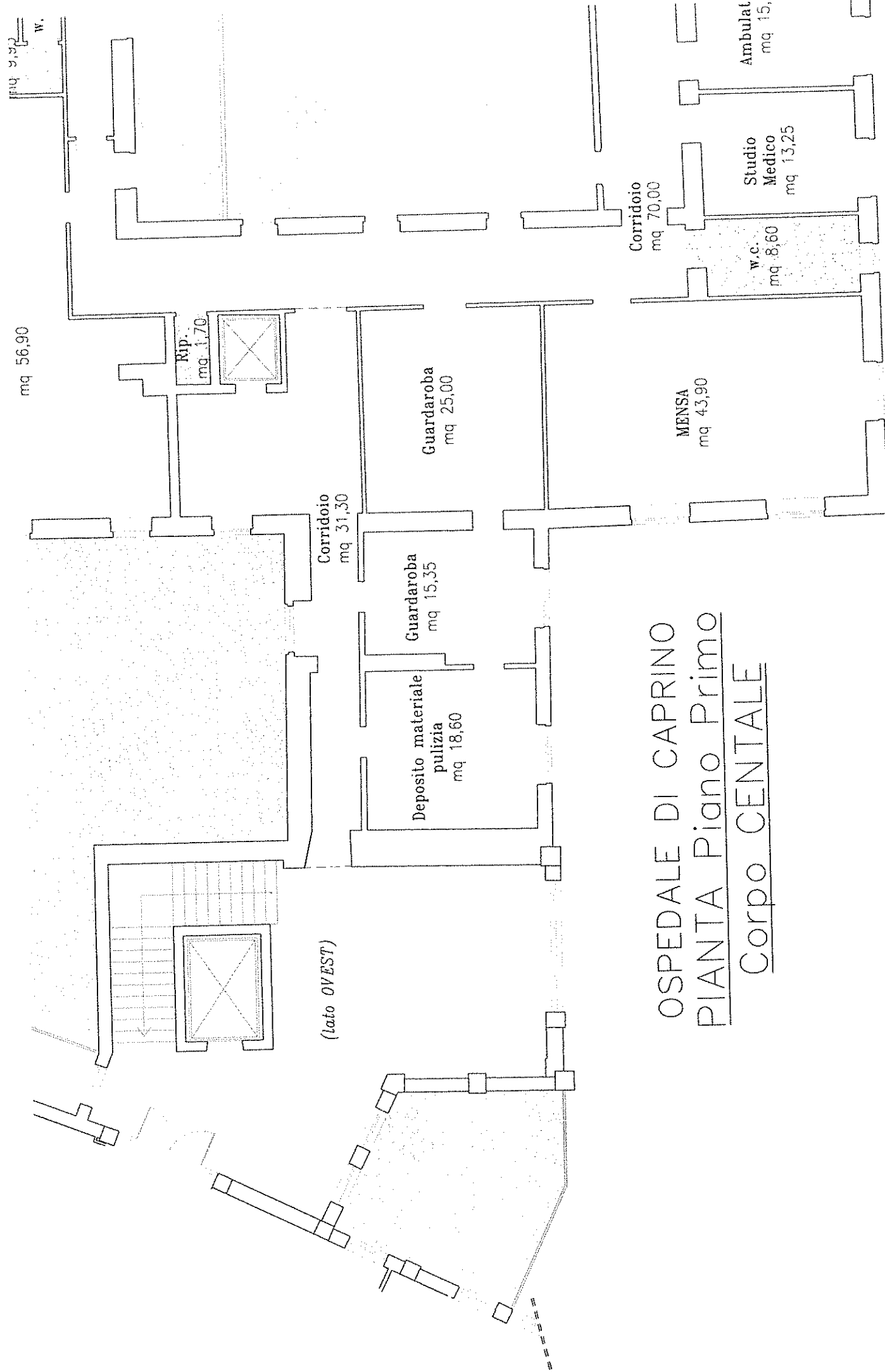


Osp. Bussolengo P. -4



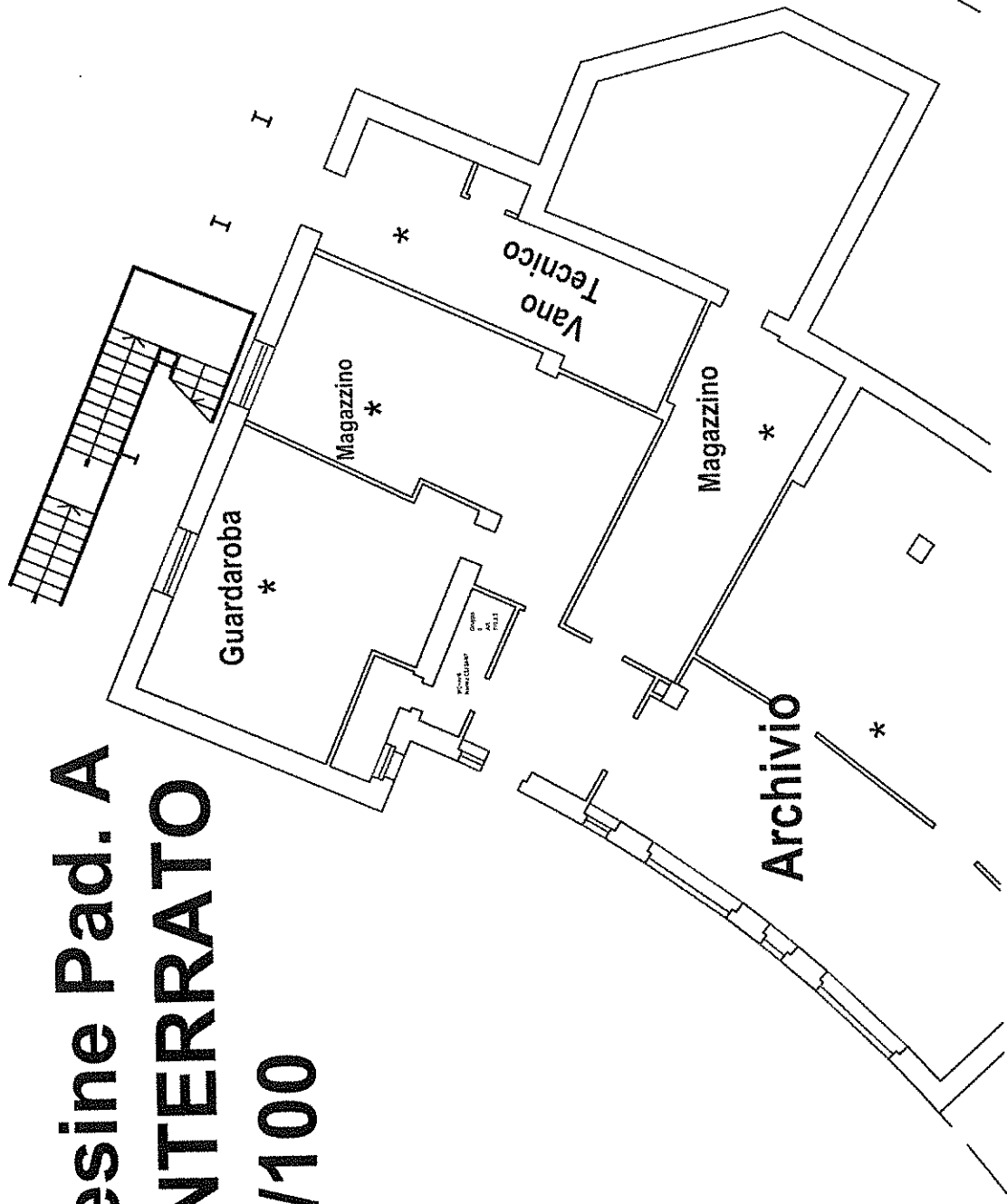


OSPEDALE DI CAPRINO
PIANTA Piano Primo
Corpo CENTALE

Ospedale Malcesine Pad. A

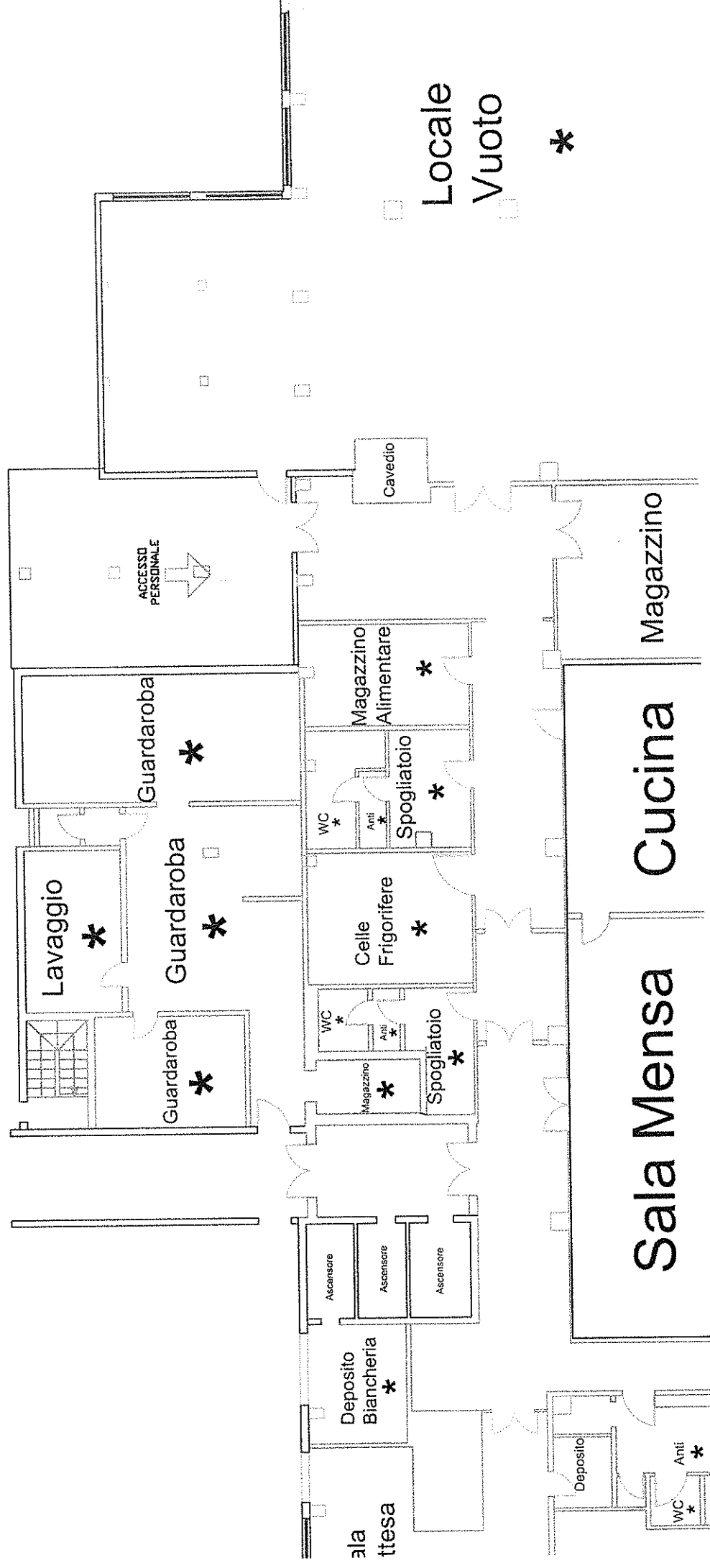
Pianta Piano INTERRATO

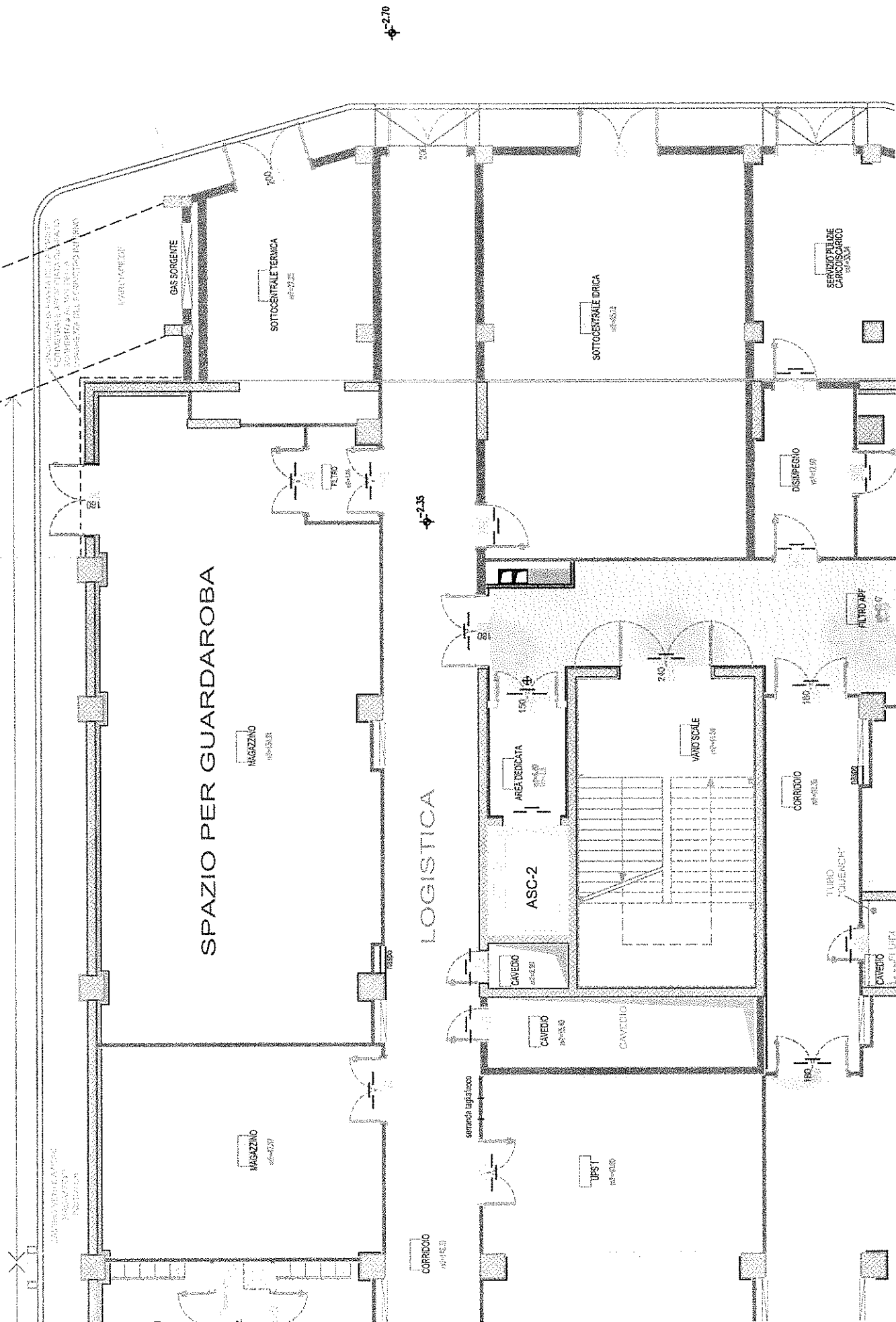
scala 1/100



Centro Polifunzionale Valeggio S/M

Interrato -2





OSPEDALE DI ISOLA DELLA SCALA

PIANO SEMINTERRATO LATO PRONTO SOCCORSO

